

National Tree Week

25th November to
3rd December 2023
<https://treecouncil.org.uk/>



LUNCH and LEARN: TREE STORIES

Presented by:

Landscape, Community, Nature

Wednesday 29th November 2023 From 12pm (12.30pm presentation)



TREE STORIES

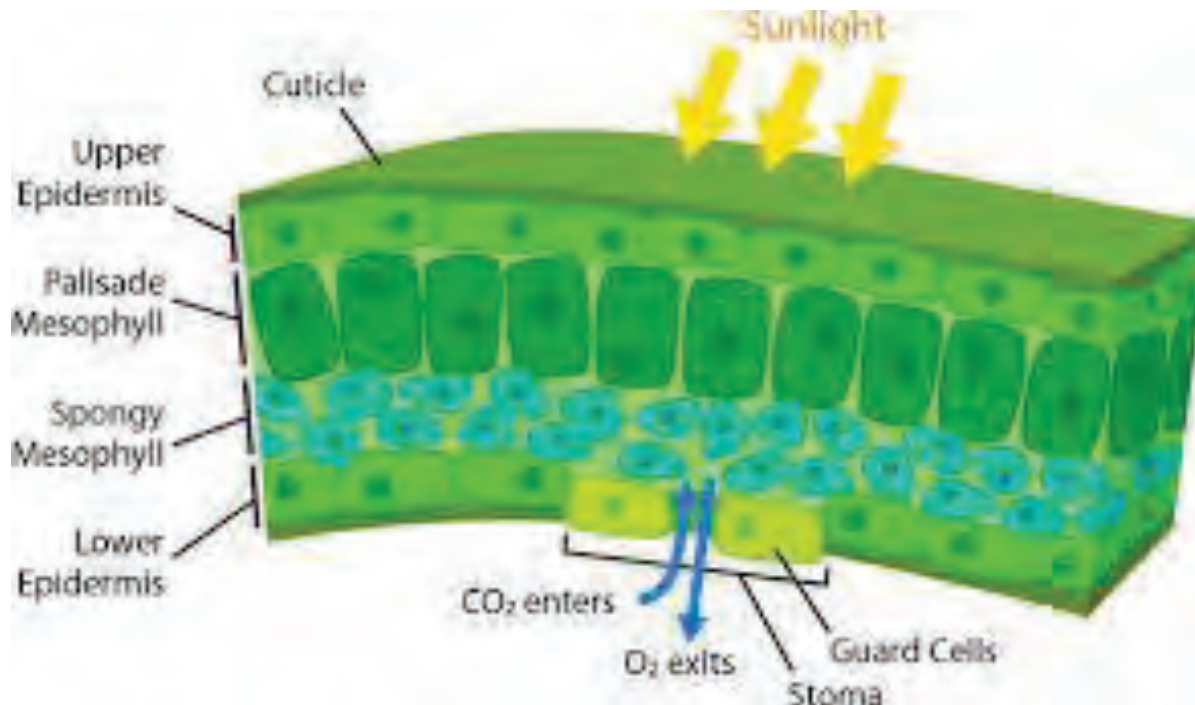
To understand the value of trees and in urban and rural landscapes

To promote protection of places where trees can grow

Promote opportunities for re-introduction into a tree depleted landscape.

Identify and enjoy trees and make them a priority for the future

Photosynthesis in Tree Leaves: Carbon utilised to make carbohydrates, oxygen produced.



Carbon Dioxide:

Approximate
CO₂ levels in atmosphere
driving climate change.

1750 280 parts per million

1980 330 parts per million

2023 420 parts per million



• An Urban Landscape Rich in Trees:

- Reduces the scale and impact of buildings and creates a Forrest like environment
- Urban Heat Island impact is reduced, and people can walk in shade.
- Trees filter harmful pollutants.
- Trees reduce flood risk
- Filtration and absorption
- Variety and vitality
- Seasonality:
Spring flowers
Summer leaves,
Autumn fruits and colorful leaves



- **HOUSING WITHOUT TREES.**
- **Flooding**
- **Overheating: Urban Heat Island**
- **Stress to humans**
- **Reduced wildlife**
- **Lack of natural 'statement' made by trees to encourage greener cities**

TREES IN CITIES: UNDER PRESSURE



- 1.Limited Space:**
- 2.Soil Quality**
- 3.Air Pollution**
- 4.Competition
for Resources**
- 5.Urban
Development
Practices**

Promote protection of places where trees can grow



<https://www.rhs.org.uk/communities/archive/PDF/Greener-Streets/greening-grey-britain-report.pdf>

Over **five million front gardens** now have **No** plants growing in them (that's **one in three** for the UK) and four and a half million front gardens (**one in four**) are completely paved over.



Middlefield Road, Bessacarr, Doncaster, before and after its avenue of sixty-four healthy lime trees were felled by the council because of 'tree root damage' to pavements.

Tree clearance over hundreds and thousands of years has left Britain with only 13 per cent tree cover.



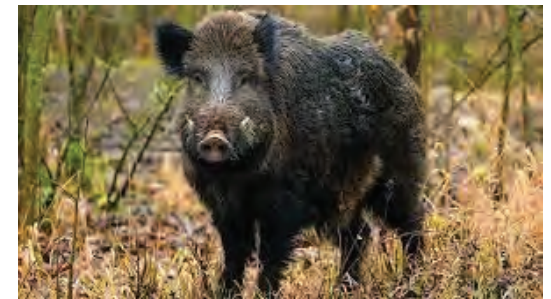
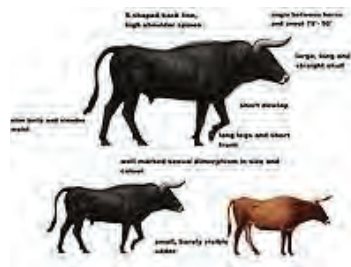
TREE COVER HISTORY



A modern perception views historic Tree cover over Britain as constant with few gaps apart from those made by humans

A more up to date view:

Large herbivores such as Aurochs, Elk, Moose, Bison, Tarpan, and Wild Boar created a balance of woodland with varied habitats such as grassland and scrub, interrupting woodland succession through, grazing seedlings, browsing, crashing through and knocking down.



Deforestation and clearance of trees and other habitat has been widespread since the second world war with intensive farming perceived as a priority



Isolated Trees in Arable Fields become unhealthy when ploughing disturbs the natural ecosystem of the soil and roots close to the tree.



Knepp Estate Rewilding Project Sussex



Tree seedlings spread from hedgerow and wood to re-populate arable fields over the last 20 years. The stocking level of herbivores regulates the degree of succession by trees.



Free roaming herbivores on 3,500
acres of former arable land

KNEPP ESTATE REWILDING PROJECT

- 100 long horn cattle
- 500 deer
- 5 Tamworth Pigs
- 30 Ponies
- Culling for meat to regulate numbers. Bio-diverse landscape of mature and young trees, scrub, grassland and wild flowers.
- The varied habitats have seen the return of nightingales, turtle doves and other species which are rapidly declining.



TREES in ECOLOGICAL SYSTEMS

- The very rare PURPLE EMPEROR Butterfly has made a return to Knepp because the males frequent the tops of oak trees and the females lay eggs on Willow or Sallow.

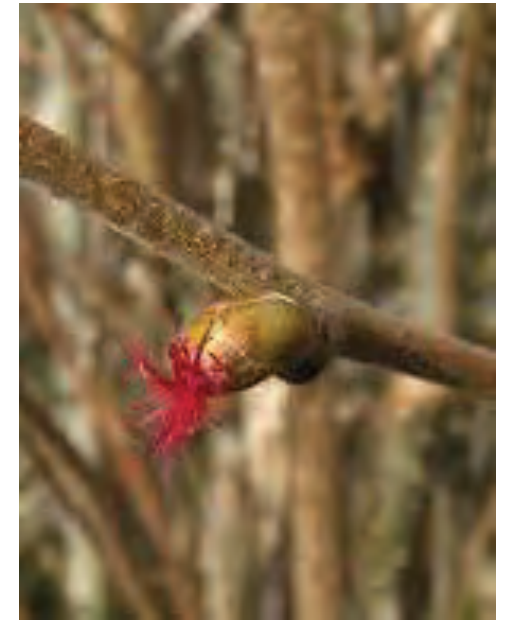
BEAVERS

As well as being gorgeous to look at, beavers are 'ecosystem engineers', meaning that they perform specific actions (such as dam building, felling trees, storing water) to manipulate the environment to suit them. It just so happens that by doing so, they end up creating a habitat that is even richer and more hospitable to other plants and animals.

BEAVER TRUST



NATIVE TREES



HAZEL *Corylus avellana*

BIRCH

Betula pendula



HAWTHORN

Crataegus monogyna



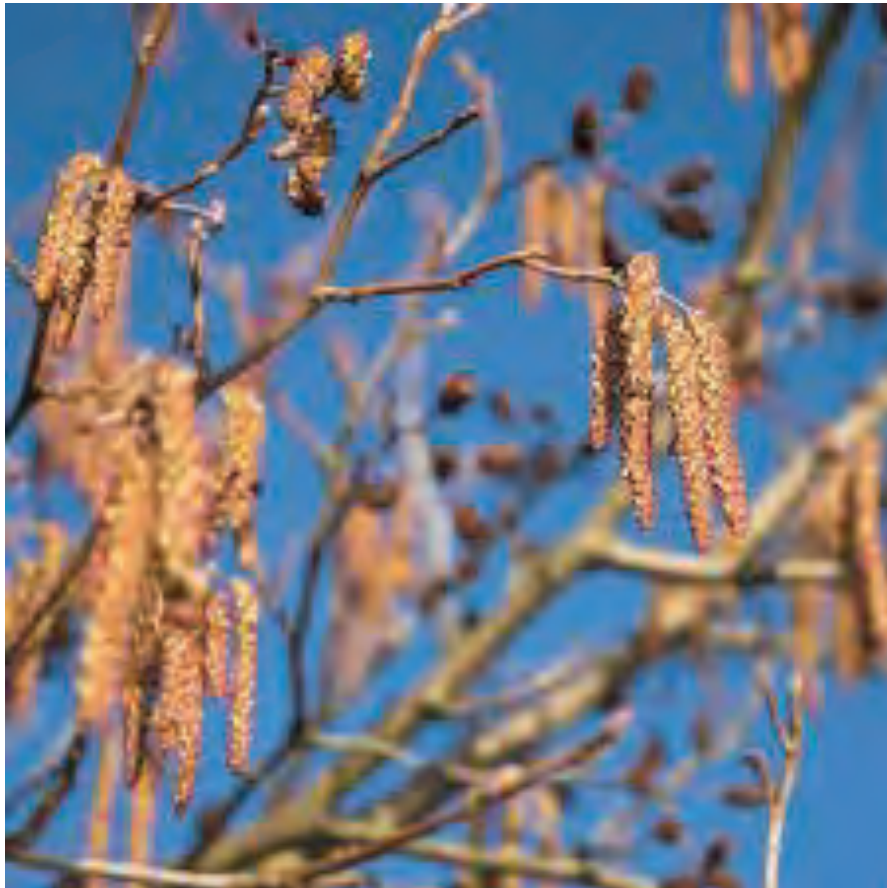
BLACKTHORN

Prunus spinosa (SLOE)



ALDER

Alnus glutinosa



Ancient woodland covers only 2.5% of the UK. Sadly, up to 70% of ancient woodlands in the UK have already been lost.



Wistman's Wood

National Nature Reserve,
Important for its fragile mosses
and lichens. The wood is home
to the incredibly rare Horsehair
lichen (Bryoria smithii) which is
found at only two sites in Britain.
This upland oak wood is a piece
of our own rainforest. It is
precious and vulnerable.

- <https://lostrainforestsofbritain.org/2021/06/29/the-case-for-allowing-wistmans-wood-to-regenerate-and-spread/>



Too Much Tarmac.
No Trees or Natural Landscape
Urban Desert



Housing: Upton, Northampton

Tree Planting in drainage swales

In heavy rain, drainage water is held back in green swales and released slowly over days into the main drains.

**Benefits ecology, tree cover,
Pollution reduction and creates
Pleasant green space in residential
areas**

**Please contribute tree
benefits and solutions ideas
to EXETER PLAN
CONSULTATION
23 October 2023 and
15 January 2024.**

Sheffield Grey to Green Scheme <https://www.greytogre/en.org.uk>



Grey to Green is an award-winning scheme bringing colour and sustainability to inner-city Sheffield. It offers a calm refuge in an urban environment and has transformed a tarmacked area into a green public space that encourages cycling and walking. Designed with climate change, wellbeing and economic investment in mind, Grey to Green is helping to lay foundations for a healthy, sustainable future for this part of Sheffield.

Designed by Nigel Dunnet

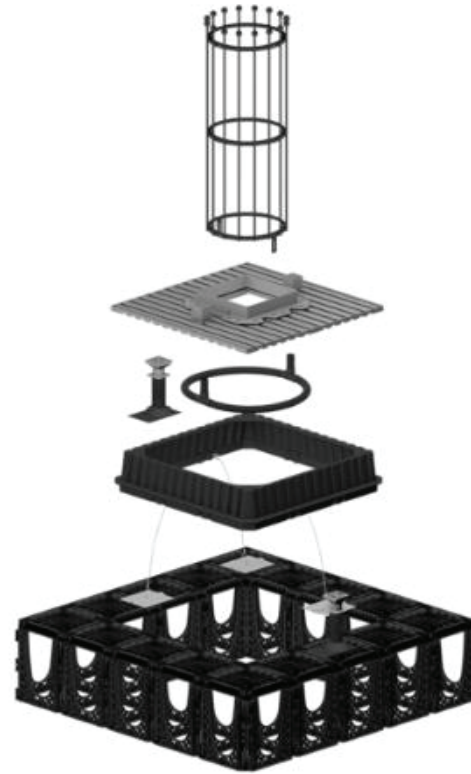
www.nigeldunnett.com

Battersea Power Station Regeneration

Large wide swathes of Trees and planting ensure tree health, variety, vitality and natural ambience softening the buildings and providing a cool and relaxing character of public space



BLUE GREEN URBAN : ARBOUR SYSTEM FOR TREES IN PAVEMENTS

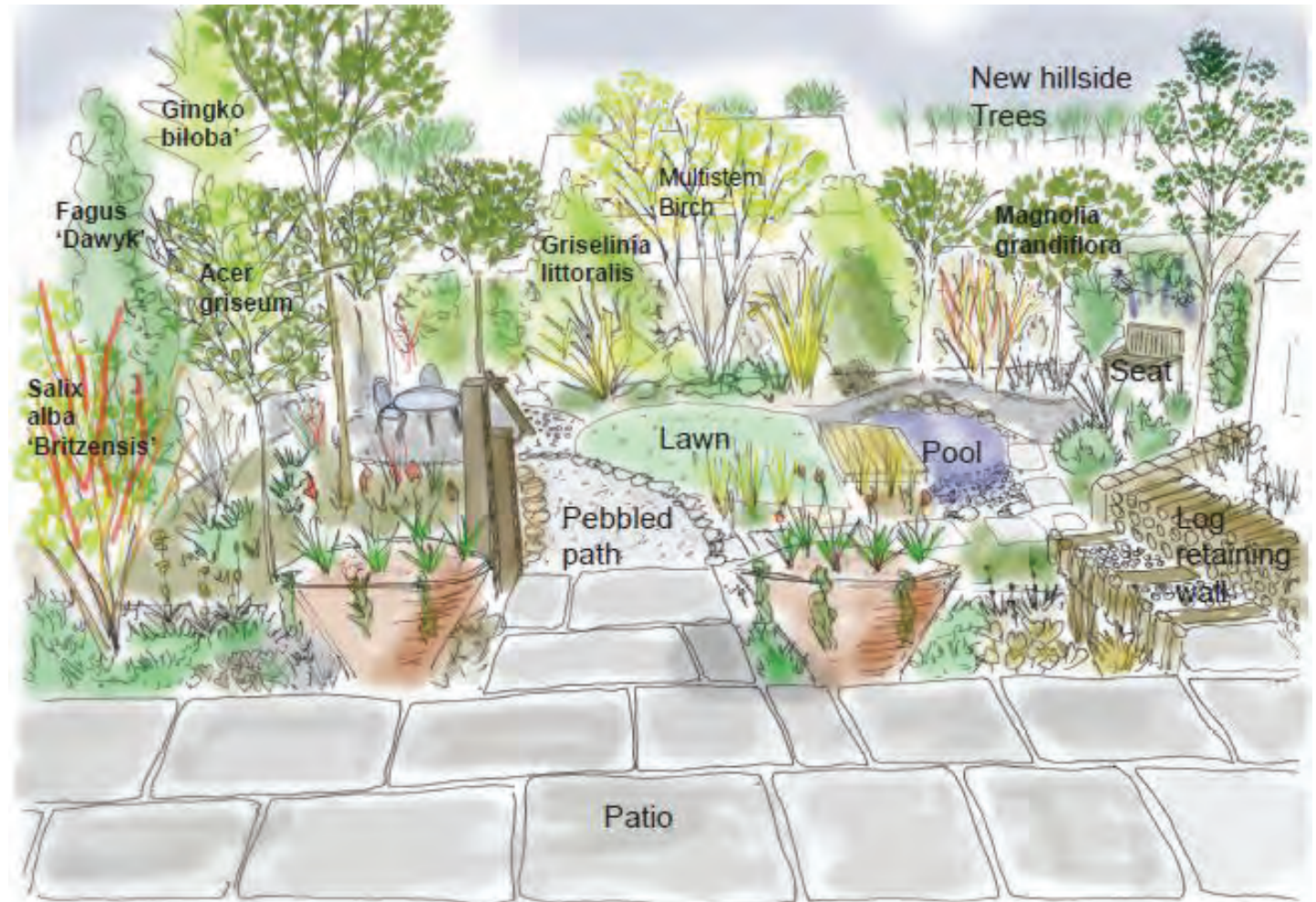


Advantages
/Disadvantages? ?

Community Autumn Fayre among the trees St Thomas Exeter



Small garden Sketch
Proposal for more
than a dozen
Deciduous and
Evergreen Trees



Plant Trees in Domestic Gardens even if the gardens are small



All too common
bland front
garden space

(Please share this idea
as contribution to
**EXETER PLAN
CONSULTATION**) from
23rd October 2023 to
15th January 2024.

Remove trees before they get too big:

(After 10 to 15 years in a small garden)



- Plant a succession of new trees to ensure a green future
- Reduced stress
- Shared and cherished experience of place
- Local walks desirable
- Shade for hot summers
- Reduced harsh building form

RETREAT and PROSPECT



Front gardens can imitate natural arrangements of trees, spaces and shrubby under-story to provide opportunities for sitting and choices for socialising.

Street

Where can Trees grow?



GREEN BELT on the edge of cities

Surely land, lying on the doorstep of millions of nature-deprived city-dwellers, ought to be filled to bursting with trees, woods and nature reserves that we can all access.

<https://experiments.friendsoftheearth.uk/blog/wildly-different-vision-greening-green-belt>

FOREST SCHOOL



Schools of the Future:

Where should they be located?

City/Countryside

"The average child spends just seven hours a week outside, and over twice that amount of time playing video games inside".

<https://www.earth.com/news/kids-playing-indoors-outdoors/>



Provide Climbing trees for the future

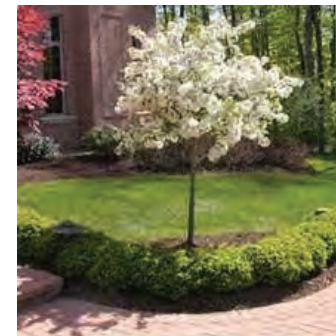
<https://www.childhoodbynature.com/the-dying-art-of-tree-climbing/>

Royal Society for the
Prevention of Accidents:

"We take the view that it's a good thing to try to equip children and young people and help them make informed decisions about the risks that they take."



Let trees take their natural form



Lollipop tree

SYCAMORE



Quick to grow large up to 35 m and create an impact however large leaves and deep shade.

Can live for 300 years

Acer pseudoplatanus



Garden Cities

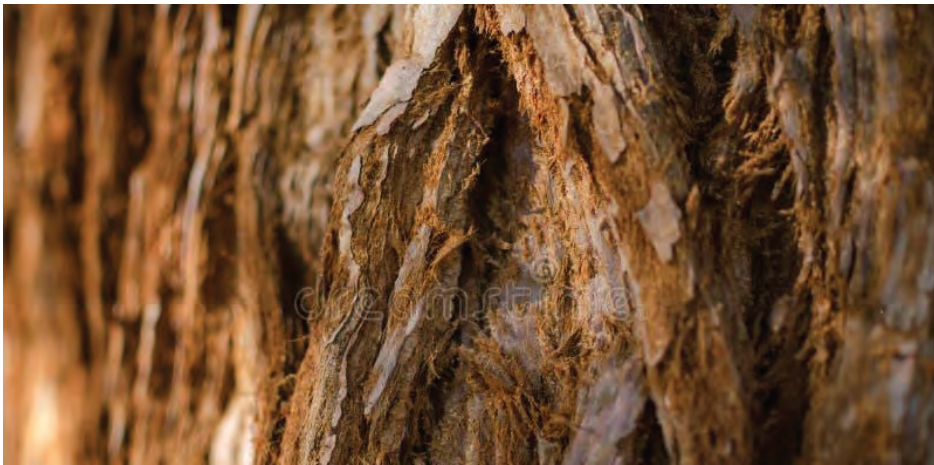
e.g. Welwyn Garden City



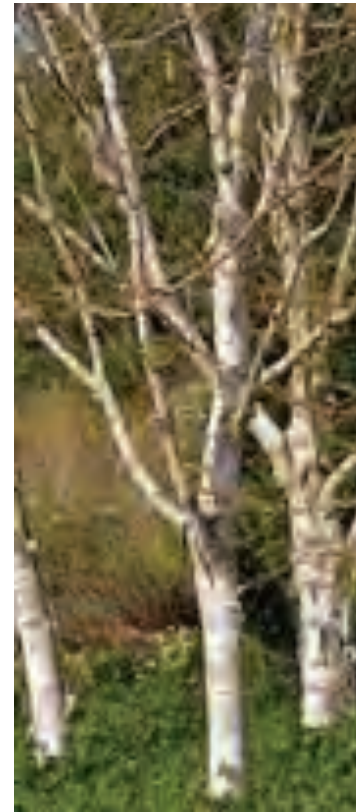
Space for trees
and green space
a priority.

The advantages
of the town and
benefits of the
countryside

GIANT REDWOODS



Ornamental Bark



Autumn Colour



Cercidiphyllum japonicum (Japanese Katsura Tree)

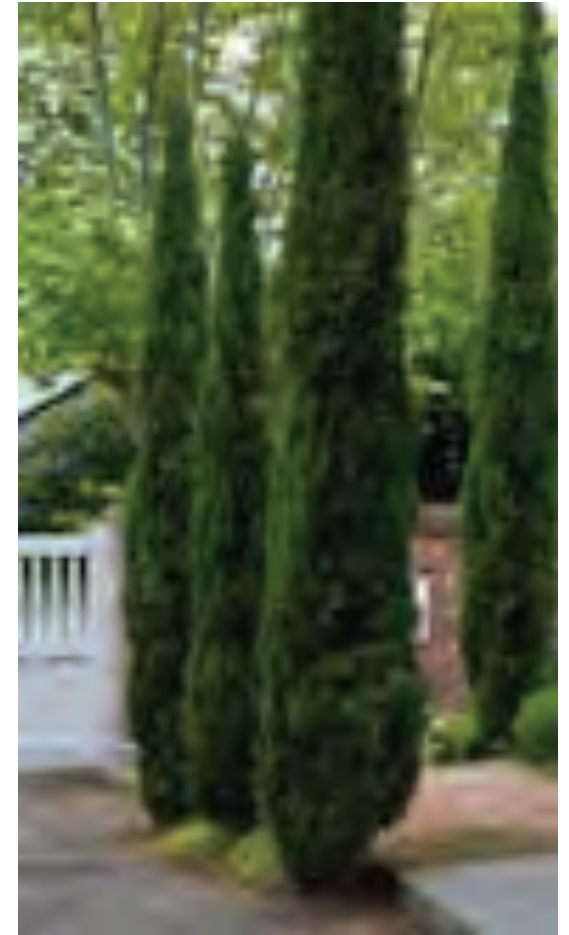
Liriodendron tulipifera
(Tulip Tree)



Fungi Mychorhiza



Columnar trees



A large, mature tree with dark, gnarled branches is covered in a dense canopy of light pink blossoms. The tree stands in a garden setting. In the foreground, there is a bed of white flowers with orange-red centers, possibly tulips. Behind this, a long, low border of small, vibrant purple flowers runs across the middle ground. To the right, a path or driveway is visible, bordered by a row of bright yellow flowers. The overall scene is a lush, colorful garden in bloom.

Winter flowers



Winters Bark and Branches

Spring Flowers

Great White Cherry



Magnolia



Prunus 'Ukon'



Spring Flowers

Judas Tree:

Cercis siliquastrum



Flowering Cherries (*Prunus*)



Spring Leaves

Beech



Horse
Chestnut

Autumn Fruits:

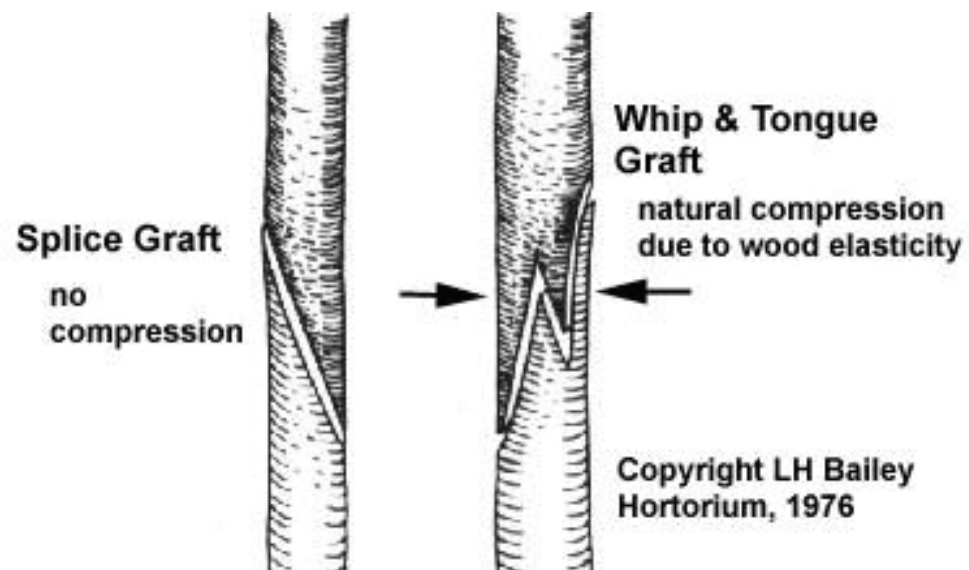
Sweet Chestnut

Castanea sativa





Horse Chestnut
Conkers:
Aesculus
hippocastanum



FRUIT TREES: Apples

SPARTAN

Dessert October



Discovery:

Dessert August



Bramley: Culinary

October



FLOW: A RIVER ORCHARD ON THE EXE



National Tree Week



Exeter City Council Tree Photography Competition

<https://news.exeter.gov.uk/take-part-in-tree-photography-competition-to-win-top-prizes/>

25 November to
3 December.

Autumn Berries and Fruits

Crab Apple



Mountain Ash



Crab Apple



American Thorn





Autumn Colour: Liquidamber (Sweet Gum)

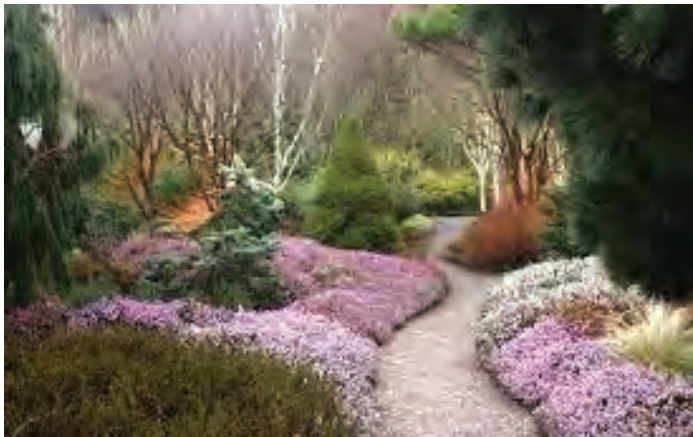
TREE FESTIVAL



LOCAL TREE MUSEUMS



RHS GARDEN ROSEMOOR



National Trust: Killerton Gardens



National Trust: Knightshayes



Trees with Weeping Habit

Weeping Birch



Laburnum



Weeping willow



Beech



Landscape, Community, Nature

Landscape Education Promoting:

PROTECTION RESTORATION ENHANCEMENT

of our natural world for public welfare and life

www.landscapecommunitynature.com (under development)

In association with: EXETER GARDEN DESIGN

www.exetergardendesign.com